

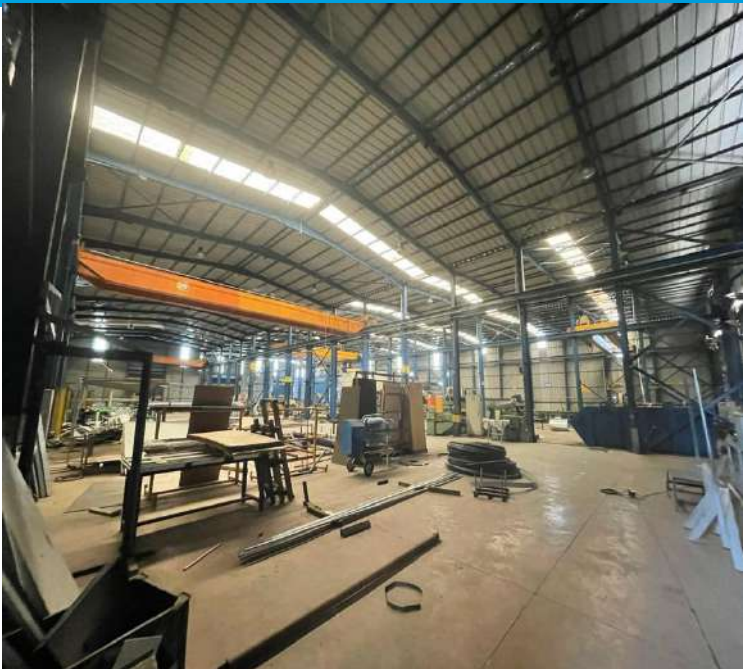
Presentation of the Property / Factory



S

Factory for sale, located in Lushnje, in the former Lushnje paper mill, industrial area, in the Cadastral Area 8572, where it is called the urban line, 2 km from the City Center, accessible on the road connecting Lushnje - Berat, accessible by trucks of various tonnages , about 1 km from the highway connecting Lushnje-Fier, Vlora, Lushnje-Berat - Lushnje - Tirana

Industrial Warehouses



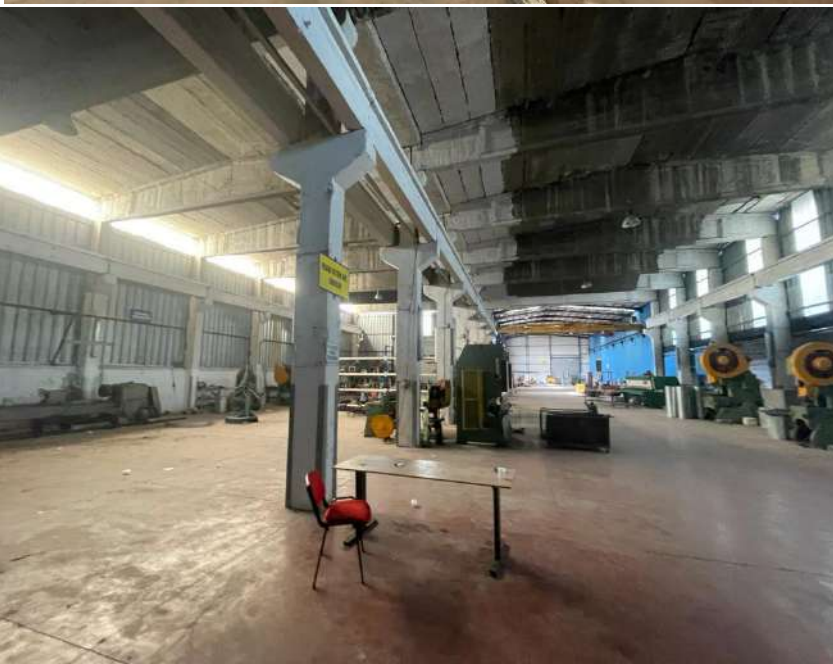
Warehouses have a height of 9 meters above, and 6 meters at the height of Vinci. The structure of the sheds is HEB 500, reinforced and last overhead crane from 5-20 Ton and over.

Each warehouse has its own entrance, with 2 doors that can be used for entry and exit. Illumination over the entire surface with powerful lamps, and each of them has 2 cranes of 2-5 tons and one of them 1 15 ton crane.



Most of the surface of the Factory and the sheds, except for 1 silo, is in industrial concrete, the iron used under the concrete of the supports under the concrete is extra for the weight of the sheet metal they hold, the grounding plant for the lightning, the high voltage power grid, the plant has the electrical cabinet its 20,000 volts





Machine settings and explanations



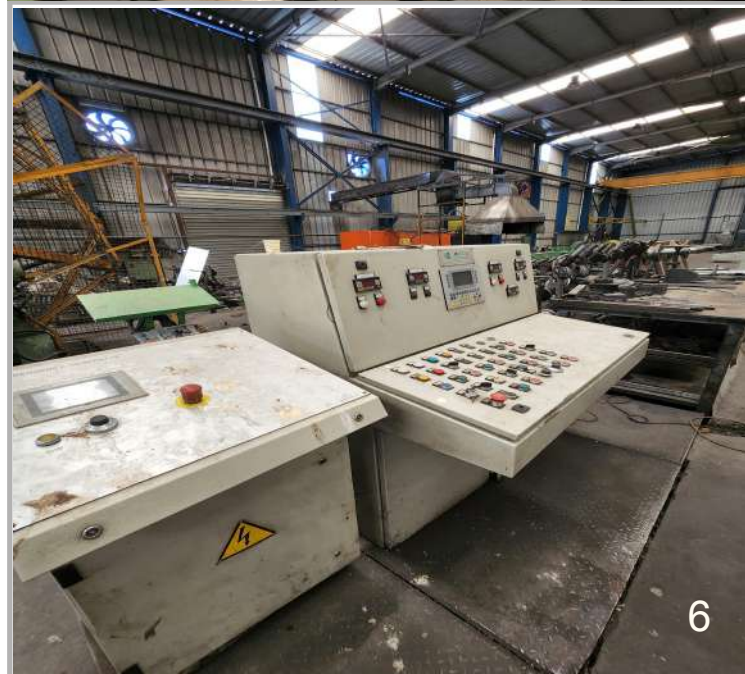
The Italian Pipes and Profiles Production Line, with electrical panel of the ADAFER Machine company, produces pipes from Ø 20 to Ø 60. Profiles from 20x20 to 60x60. Thicknesses from 0.8 mm to 2.5, 2.8 mm, black and galvanized. Lengths of different standard tubes The line can be used for different metal products as you order rollers and make the profile you want or for any tube or profile you want (is needed some new mill rolls for precision good quality of tube and profiles because the older have some consumption , everything else is great condition)



The production line extends to the whole workshop named NO.1

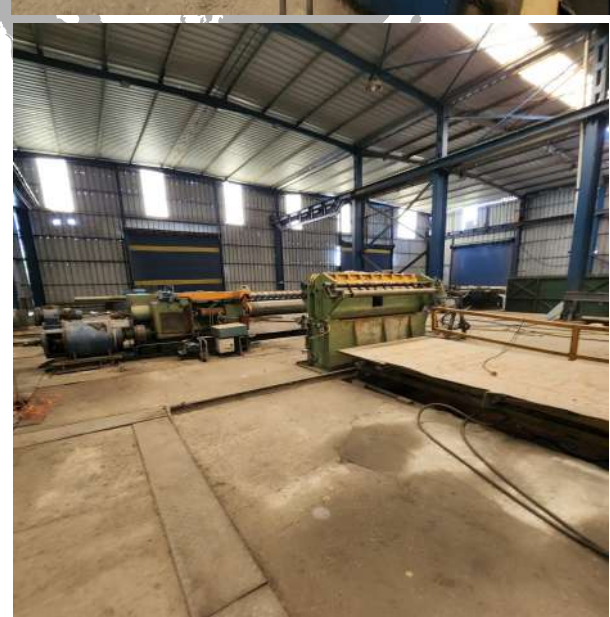


The Italian Pipe and Profile Production Line, with electrical panel by Termo Machine, produces pipes from Ø 76 to Ø 127. Profiles from 70x70 to 120x80, from 1.5 mm to 2.5, 2.8 mm, 3 mm, black and galvanized Different lengths Standard pipes The line can also be used for different metal products after ordering the rolls and making the profile you want or for any pipe or profile you want (is needed some new mill rolls for precision good quality of tube and profiles because the older have some consumption , everything else is great condition)

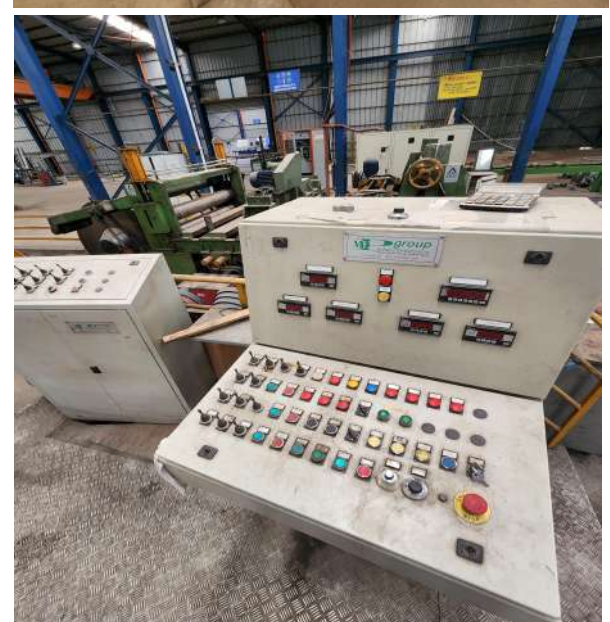




The spencer, which carries out the flattening / straightening of the sheet metal of the trays with a width of 1250 mm and in the required length, by Spencer from 0.5 mm to 2.5 -3 mm



Cutter for cutting sheet metal, width 1250 mm, galvanized and black, diameter from 0.4 mm to 3 mm, Cut sheet metal to the required dimensions, for the production of pipes, shutters, gutters of any size. The line is Italian, latest revision from MP Elettronica, machinery located in the NO.2 department





Milling CNC 2008 Italian



Lathe CNC Daewoo



Tempering furnace for stamps



Manual Lathe 15 meters length



Manuale Lathe



metalworking machinery



vertical radial metalworking machinery



metalworking machinery





Punching machine The machine that opens holes of different sizes and coordinated shapes is the CNC, Amada





CoraMut bending machine 100 Tons For the return of sheet metal, thickness from 0.4 to 3 mm, with a length of 3 m

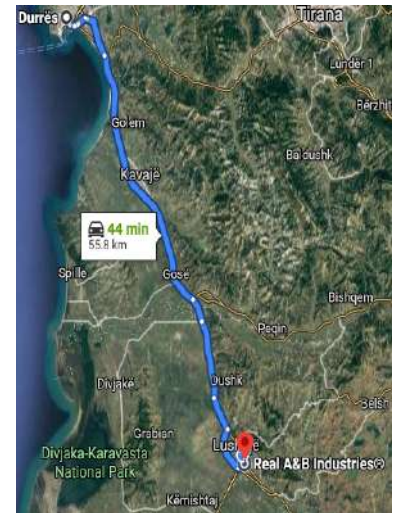
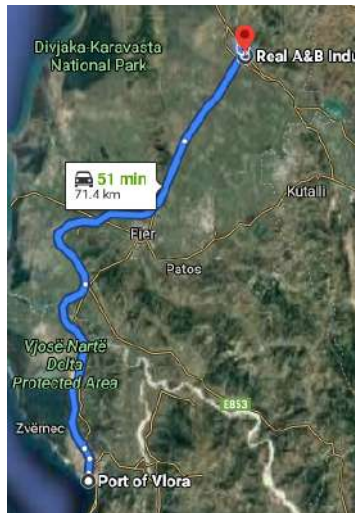


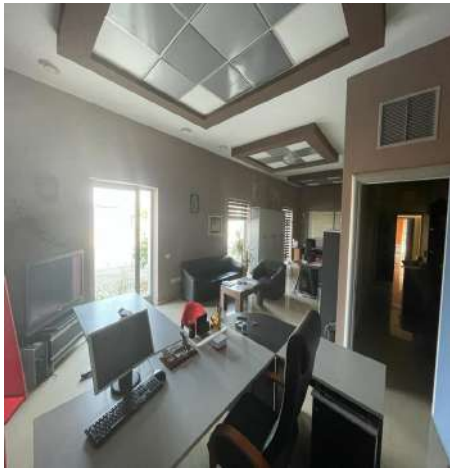
Hydraulic machines for various drilling, Italian,

Geographical extension and space



The plant is spread over an area of 12,000 square meters, which includes 5,500 square meters of silos. 750 m² of offices, a total of 2 floors, and the remainder is an infrastructure square. The factory is located 71 km from the port of Vlora and 60 km from the port of Durrës.





The offices consist of 2 floors of 375 square meters each, Information Office, Reception Room, Meeting Room, Bathroom, Engineering Office, Second Separate Office, etc.



2nd floor of offices with windows, not furnished



The factory has its own diesel fuel system, an employee room, an employee bathroom, a parking lot, a mini flower garden, etc.

The factory also has the possibility of financing from the banks The price of the factory and the warehouses and of all property with machines reaches in total final price (the factory and the property have all the relevant documents for the sale according to the legislation of the state)