

JawaySteel

Product display Brand publicity Company introduction

Jaway company Catalog



Designed by Jaway

CONTENTS PAGE

01

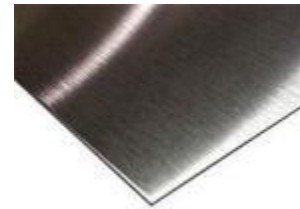
About Jaway

02

Hot Products

03

Contact US



Jawaysteel

1

About Jaway

01 : Company introduction

02 : Company culture

03 : Business Scope

04 : Enterprise honor

01 Company introduction



Jaway Steel Co., Ltd. founded in 1998, is a professional manufacturer and global exporter specializing in metal manufacture and exportation.

Our plant now covers a land area of 38000 square meters, with 160 employees and 39 technicians. The ranges of our stainless steel products are expanded to more varied choices, such as stainless steel wire, rod, round bar, flat bar, angle bar, channel bar, pipe, plate, sheet and coil made according to the norm and specification in GB, ASTM, JIS, EN, TOCT, KSD, and IS.

If you are interested in our products, please feel free to contact us. We warmly welcome friends and cooperators from all over the world!

02 Company culture

Core values

- People-oriented, honest and pragmatic
- Innovative and enterprising, and return to society

Enterprise goal

- Create a famous brand in China
- Make a world-class boutique

Enterprise spirit

- Famous in China
- Famous in the world

03 Business scope (The region with the largest number of partner countries)



● **Asia**
Accumulated transactions
in 22 countries

● **America**
Accumulated transactions
in 10 countries

● **Africa**
Accumulated transactions
in 17 countries

04 Enterprise honor



Rated as "integrity unit" by the government

Many times as "integrity unit",
"outstanding private enterprises",
"civilized unit"

Alibaba gold supplier

2013-2018, consecutively won the honor of Alibaba Gold Supplier

Jawaysteel

2

Hot Products

- 01 : Stainless steel
- 02 : Carbon steel
- 03 : Galvanized steel
- 04 : Alloy steel

01 Stainless steel



Introduction

Stainless steel is the abbreviation of stainless acid-resistant steel. It is resistant to air, steam, water and other weak corrosive media or stainless steel.

Stainless Steel

1

Wire

Stainless Steel Spring Wire
Stainless Steel Soft Wire
Stainless Steel Wire Rod
Stainless Steel Wire Rope

2

Bar

Stainless Steel Round Bar
Stainless Steel Square Bar
Stainless Steel Angle Bar
Stainless Steel Channel Bar

4

Sheet

Stainless Steel Hot Rolled Plate
Stainless Steel Cold Rolled Sheet
Stainless Steel Perforated Sheet
Stainless Steel Embossed Sheet
Stainless Steel Checkered Sheet
Stainless Steel Color Coated Sheet

3

Pipe

Stainless Steel Seamless Pipe
Stainless Steel Square Pipe
Stainless Steel Pipe Fittings
Stainless Steel Welded Pipe

5

Coil

Hot Rolled Stainless Steel Coil
Cold Rolled Stainless Steel Coil
Thin Stainless Steel Strip

Stainless Steel Wire

1

Wire

Stainless Steel Spring Wire

Stainless Steel Soft Wire

Stainless Steel Wire Rod

Stainless Steel Wire Rope

001

Stainless Steel Spring Wire



01

Grade and Quality:

200 series:201,202,204Cu.

300series:301,302,304,304Cu,303,303Se,304L,305,307,308 ect.

400series:410,420,430,420J2,439,409,430S,444,431,441,446 ect.

02

Size and Diameter:

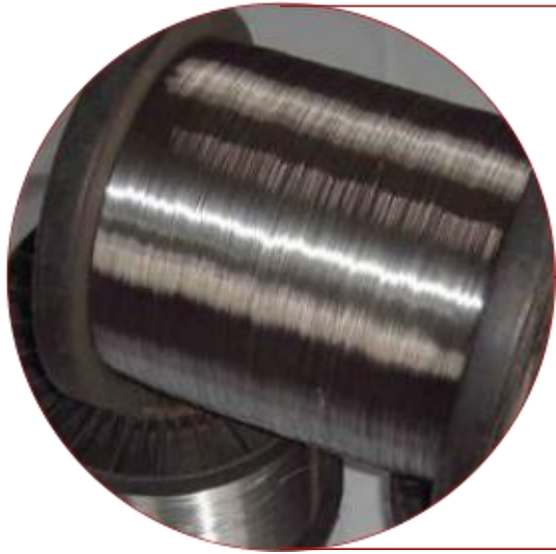
From 0.05mm to 10mm, based on buyer's requirement.

03

Surface and Finishing:

Pickled,acid white,bright,matt,polished etc.

002 Stainless Steel Soft Wire



01

Grade and Quality:

200 series:201,202,204Cu.

300series:301,302,304,304Cu,303,303Se,304L,305,307,308 etc.

400series:410,420,430,420J2,439,409,430S,444,431,441 etc.

02

Size and Diameter:

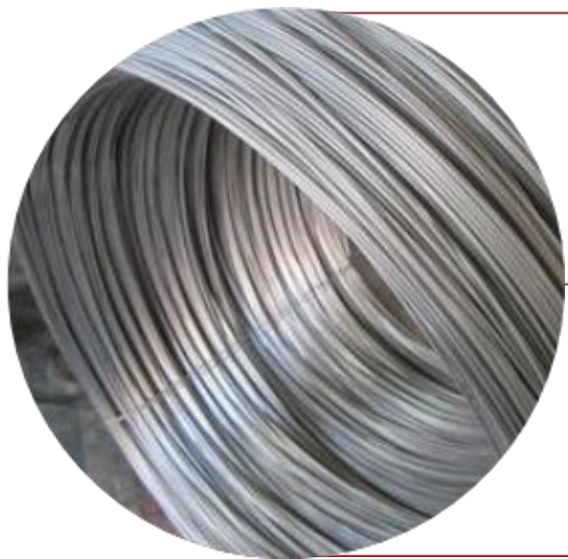
From 0.05mm to 3mm, based on buyer's requirement.

03

Surface and Finishing:

Pickled,acid white,bright,matt,polished etc.

003 Stainless Steel Wire Rod



01

Grade and Quality:

200 series:201,202,204Cu.

300 series:301,302,302HQ,304,304Cu,303,303Se,304L etc.

400 series:410,420,430,420J2,439,409,430S,444 etc.

02

Size and Diameter:

From 3mm to 20mm,base on buyer's requirement.

03

Surface and Finishing:

Pickled,acid white,bright,matt,polished etc.

004 Stainless Steel Wire Rope



01

Grade and Quality:

300 series:301,302,302HQ,304,304Cu,303,303Se,304L,305 etc.

02

Size and Diameter:

1x7, 1X12 , 1x19, 1*37, 3*7, 6*7, 7*7, 6x7+FC, 6x19+FC, 7x19, 19X7, 6*25fi+FC, 6x12+7FC, 6*15+7FC, 6x27+7FC, 6*36+FC, 6*37, 18*7, 8*19 etc.

03

Surface and Finishing:

Pickled,acid white,bright,matt,polished etc.

Stainless Steel Bar

2 Bar

Stainless Steel Round Bar

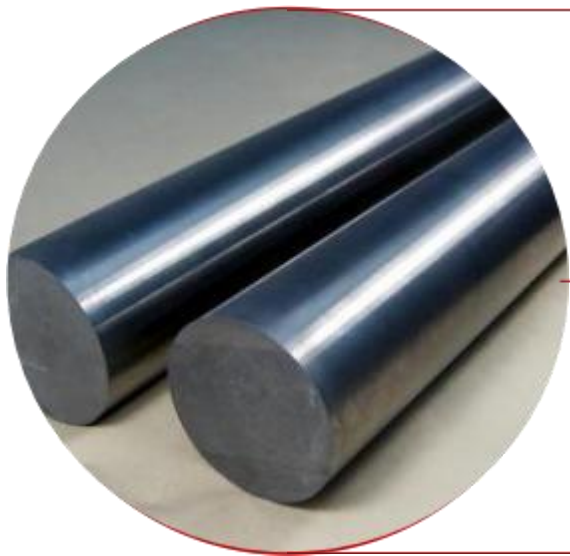
Stainless Steel Square Bar

Stainless Steel Angle Bar

Stainless Steel Channel Bar

001

Stainless Steel Round Bar



01

Grade and Quality:

200 series:201,Y201Cu,202 etc.

300 series:301,303,304,304L.310.316.316L,321

400 series:410,416,420,430,430F,431 etc.

02

Size and Diameter:

Hot-rolled bar:5.5mm---110mm.

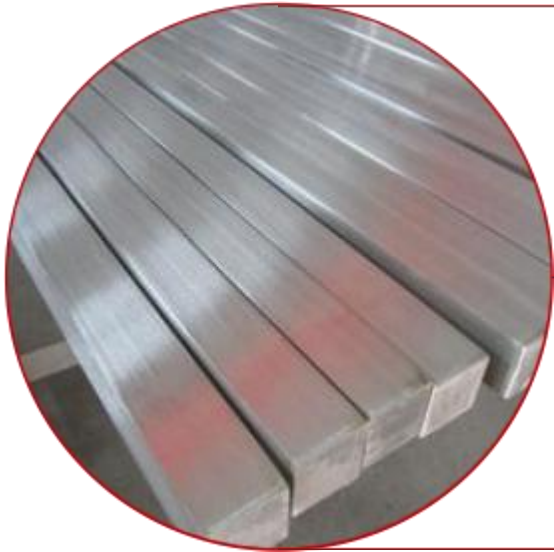
Hot- forged bar: 110mm---400mm.

03

Surface and Finishing:

Black, bright, pickled.

002 Stainless Steel Square Bar



01

Grade and Quality:

200 series:201,Y201Cu,202,

300 series:303,304,304L.316.316L,321,

400 series:410,420,416,430,430F,431 etc.

02

Size and Diameter:

10mm---45mm(Hot rolled),3mm---60mm(cold drawn),50mm---180mm(Milling).

Normal Length is 2000mm---6000mm.

03

Surface and Finishing:

Pickled, bright, polishing etc.

003 Stainless Steel Angle Bar



01

Grade and Quality:

201,202,303,304, 304L,316,316L,321,410,420 etc.

02

Size and Diameter:

As customer's requirements

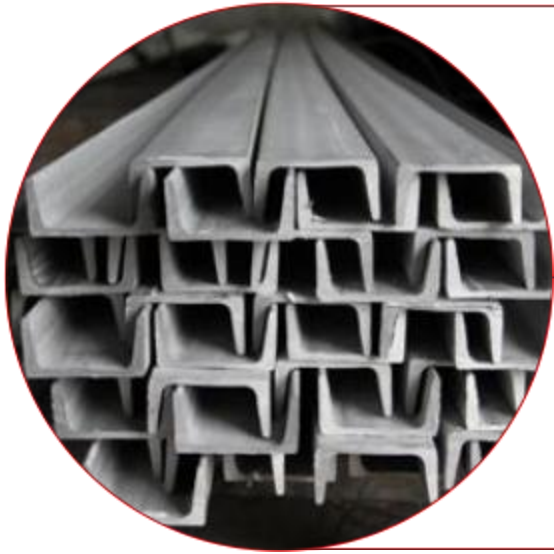
Specified length is 4,5,6m. Length Tolerance $\leq +40\text{mm}/\text{pcs}$.

03

Surface and Finishing:

Pickled& sand blasting& bright, we can polish the bar grit 400& 600& 800 according to customer's requirement.

004 Stainless Steel Channel Bar



01

Grade and Quality:

200 series:201,202,204Cu.

300series:301,302,304,304Cu,303,303Se,304L,305,307,308 etc.

400 series:410,420,430,420J2,439,409,430S,444,431,441,446 etc.

02

Size and Diameter:

Thickness:3mm—80mm.

Width:10mm—200mm.

Length:2000mm—7500mm or as customer's requirements.

03

Surface and Finishing:

Pickled,acid white,bright,matt,polished etc.

3

Pipe

Stainless Steel Seamless Pipe

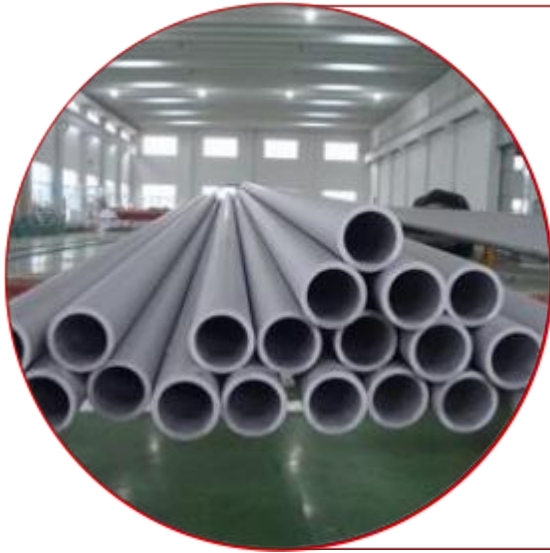
Stainless Steel Square Pipe

Stainless Steel Pipe Fittings

Stainless Steel Welded Pipe

001

Stainless Steel Seamless Pipe



01

Grade and Quality:

200 series:201,202,204Cu.

300 series:301,302,304,304Cu,303,303Se,304L,305,307,308

400 series:410,420,430,420J2,439,409,430S,444,431,441,446,

02

Size and Diameter:

Diameter from 10mm to 1000mm,thickness from 0.5mm to 50mm,base on buyer's requirement.

03

Surface and Finishing:

Pickled,bright,matt,polished,mirror.

002 Stainless Steel Square Pipe



01

Grade and Quality:

200 series:201,202,204Cu.

300series:301,302,304,304Cu,303,303Se,304L,305,307,308 etc.

400 series:410,420,430,420J2,439,409,430S,444,431,441,446 etc.

02

Size and Diameter:

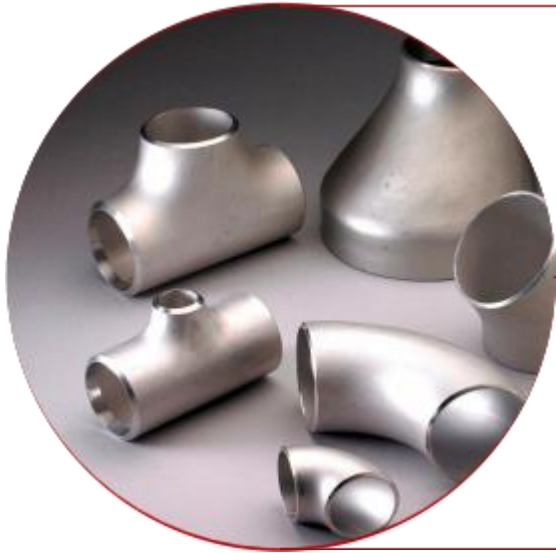
Length and width from 10mm to 1000mm,thickness from 0.5mm to 50mm,base on buyer's requirement.

03

Surface and Finishing:

Pickled, bright, matt, polished ,mirror.

003 Stainless Steel Pipe Fittings



01

Grade and Quality:

300series:301,302,302HQ,304,304Cu,303,303Se,304L,305 etc.

02

Size and Diameter:

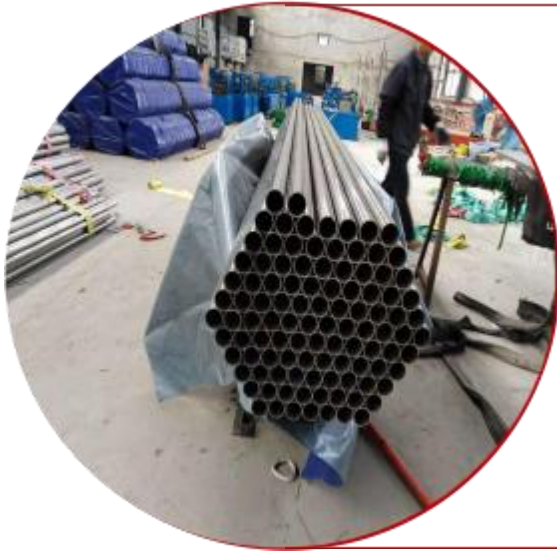
Seamless 1/2" To 48" Welded To 72", Sch5S-Sch160, XS,XXS
,base on buyer's requirement.

03

Surface and Finishing:

Sand Rolling,Sand Blasting,Polishing,pickling etc.

004 Stainless Steel Welded Pipe



01

Grade and Quality:

200 series:201,202,204Cu.

300 series:301,302,304,304Cu,303,303Se,304L,305,307,308 etc.

400 series:410,420,430,420J2,439,409,430S,444,431,441,446 etc.

02

Size and Diameter:

Diameter from 10mm to 1000mm,thickness from 0.5mm to 50mm,base on buyer's requirement.

03

Surface and Finishing:

Pickled, bright,matt,polished,mirror.

4

Sheet/Plate

Stainless Steel Hot Rolled Plate

Stainless Steel Cold Rolled Sheet

Stainless Steel Perforated Sheet

Stainless Steel Embossed Sheet

Stainless Steel Checkered Sheet

Stainless Steel Color Coated Sheet

001

Stainless Steel Hot Rolled Plate



01

Grade and Quality:

200 series: 201,202,204Cu.

300 series: 301,302,304,304Cu,303,303Se,304L,305,307,308,

400 series: 410,420,430,420J2,439,409,430S,444,431,441,446.

02

Size and Diameter:

Thickness: 0.3mm-60mm.

Width & length: 1500*3000mm, 1500*6000mm or following customer's demands.

03

Surface and Finishing:

No.1&2B &BA&NO.4&Mirror.

002 Stainless Steel Cold Rolled Sheet



01

Grade and Quality:

200 series: 201,202,204Cu.

300 series: 301,302,304,304Cu,303,303Se,304L,305,307,308 etc.

400 series: 410,420,430,420J2,439,409,430S,444,431,441 etc.

02

Size and Diameter:

Thickness: 0.33mm-3mm.

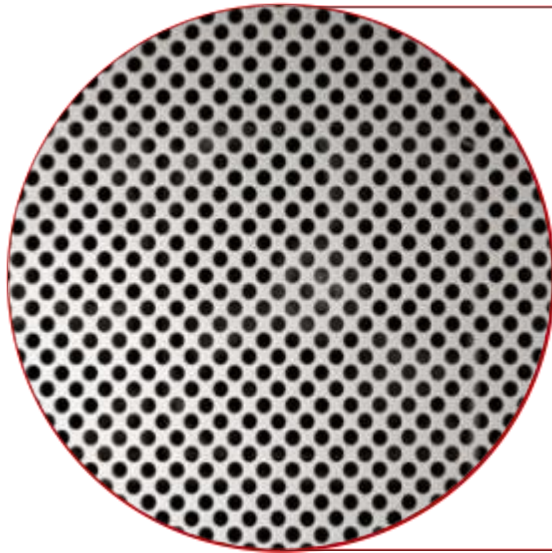
Width & length: 1219*2438mm, 1250*2500mm or following customer's demands.

03

Surface and Finishing:

2B &BA&NO.4&Mirror.

003 Stainless Steel Perforated Sheet



01

Grade and Quality:

200 series: 201,202,204Cu.

300 series:301,302,304,304Cu,303,303Se,304L,305,307 etc.

400 series:410,420,430,420J2,439,409,430S,444,431,441,446 etc.

02

Size and Diameter:

Thickness: 3mm-60mm or as per your requirement.

Width & length: 1200*2400mm, 1250*2500mm, 1500*3000mm, 1500*6000mm or following customer's demands.

03

Surface and Finishing:

No.1&2B &BA&NO.4&Mirror.

004 Stainless Steel Embossed Sheet



01

Grade and Quality:

200 series: 201,202,204Cu.

300 series: 301,302,304,304Cu,303,303Se,304L,305,307,308 etc.

400 series: 410,420,430,420J2,439,409,430S,444,431,441 etc.

02

Size and Diameter:

Thickness range: 0.2-100mm.

Width range: 1000-1500mm.

Length range: 2000mm, 2438 mm, 2500 mm, 3000 mm, 3048 mm.

03

Surface and Finishing:

2B, BA, No.4, 8k, hairline, embossed, etched, vibration, pvd color coated, titanium, sand blasted, anti-fingerprint.

005 Stainless Steel Checked Sheet



01

Grade and Quality:

200 series: 201,202,204Cu.

300 series: 301,302,304,304Cu,303,303Se,304L,305,307,308 etc.

400 series: 410,420,430,420J2,439,409,430S,444,431,441,446 etc.

02

Size and Diameter:

Thickness range: 0.2-100mm ; Width range: 1000-1500mm.

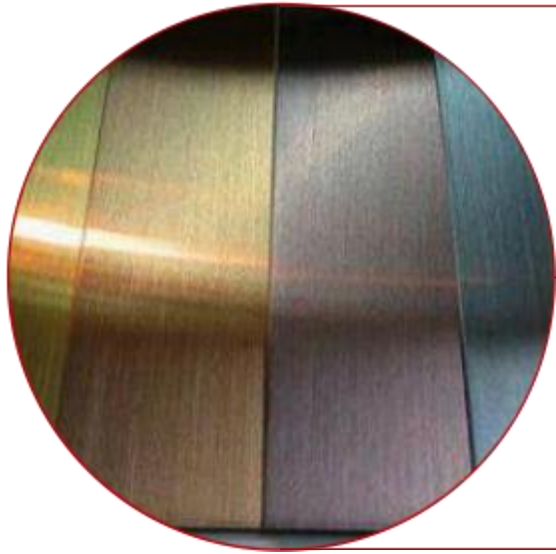
Length range: 2000mm, 2438 mm, 2500 mm, 3000 mm, 3048 mm.

03

Surface and Finishing:

2B, BA, No.4, 8k, hairline, embossed, etched, vibration, pvd color coated, titanium, sand blasted,anti-fingerprint.

006 Stainless Steel Color Coated Sheet



01

Grade and Quality:

200 series: 201,202,204Cu.

300 series: 301,302,304,304Cu,303,303Se,304L,305,307 etc.

400 series: 410,420,430,420J2,439,409,430S,444,431,441 etc.

02

Size and Diameter:

Thickness range: 0.2-100mm.

Width range: 1000-1500mm.

Length range: 2000mm, 2438 mm, 2500 mm, 3000 mm, 3048 mm.

03

Surface and Finishing:

Surface processing: Coated, Corrugated, Galvanized

Surface Paint: EP, PE, HDP, SMP, PVDF.

5

Coil/Strip

Hot Rolled Stainless Steel Coil

Cold Rolled Stainless Steel Coil

Thin Stainless Steel Strip

001

Hot Rolled Stainless Steel Coil



01

Grade and Quality:

200 series: 201, 202, 204Cu.

300series:301,302,303,303Se,304,304L,304Cu,305,307,308 etc.

400 series:410,420,420F,420J2,430,439,409,430S,444,431 etc.

02

Size and Diameter:

Thickness: 3-20mm, or as customers' demands.

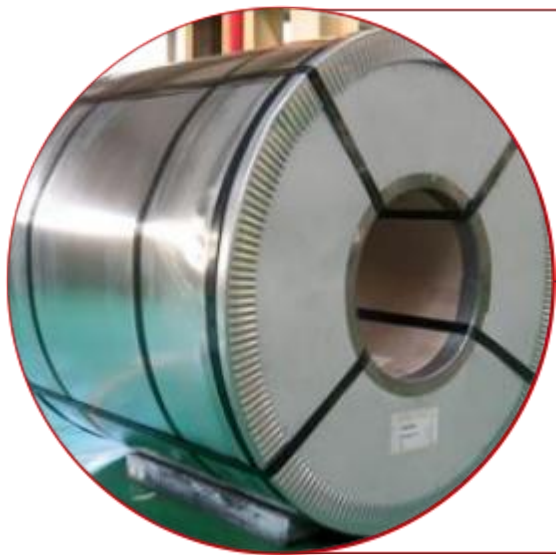
Width: 15-1500mm, or as customers' demands.

03

Surface and Finishing:

No.1, BA, 8K, No. 4, Mirror finish, etc.

002 Cold Rolled Stainless Steel Coil



01

Grade and Quality:

200 series: 201, 202, 204Cu.

300series:301,302,303,303Se,304,304L,304Cu,305,307,308 etc.

400 series:410,420,420F,420J2,430,439,409,430S,444,431,441 etc.

02

Size and Diameter:

Thickness: 0.3- 3mm, or as customers' demands.

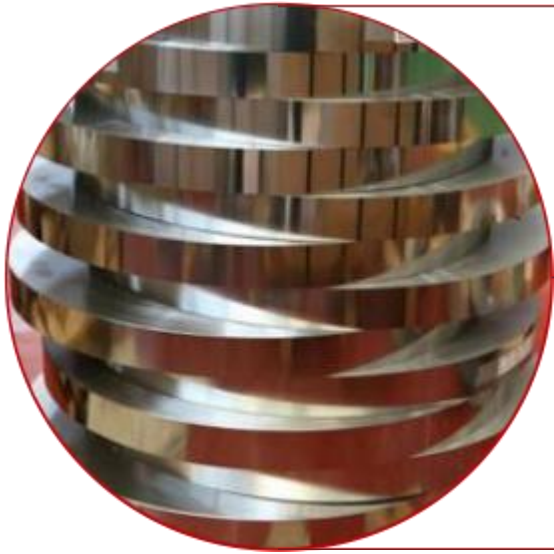
Width: 15-1219mm, or as customers' demands.

03

Surface and Finishing:

2B, BA, 8K, No. 4, Mirror finish, etc.

003 Thin Stainless Steel Strip



01

Grade and Quality:

200 series: 201, 202, 204Cu.

300series:301,302,303,303Se,304,304L,304Cu,305,307,308 etc.

400 series:410,420,420F,420J2,430,439,409,430S,444,431 etc.

02

Size and Diameter:

Thickness: 0.15-1.5 mm, or as customers' demands.

Width: 15-1219mm, or as customers' demands.

03

Surface and Finishing:

2B, BA, No.4, 8K, Mirror finish, etc.

02 Carbon steel

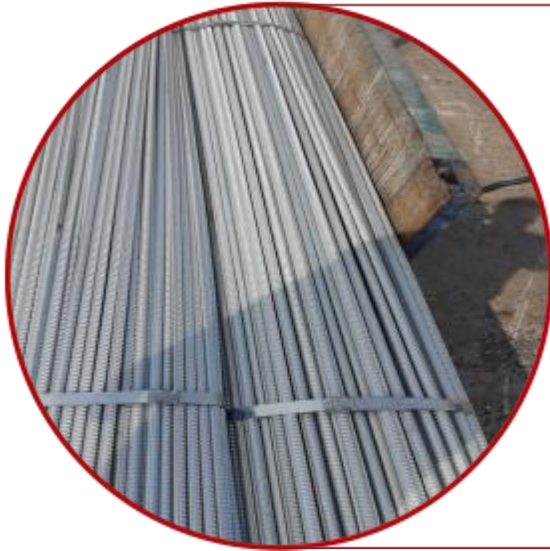


Introduction

Carbon steel is an iron-carbon alloy with a carbon content of 0.0218% to 2.11%.
Also called carbon steel.

001

Rebar



01

Grade and Quality:

HRB400 HRB400E

02

Size and Diameter:

8/10/12/14/16/18/20/22/25/28/32mm

03

Surface and Finishing:

Mill/Galvanized

002 Carbon Steel Wire



01

Grade and Quality:

Q195、Q215、Q235、Q255、Q275、Q345.

High quality carbon structural steel:20#、45#、70#、65Mn etc.

02

Size and Diameter:

Diameter from 0.05mm to 10mm.

03

Surface and Finishing:

Bright and black.

003

Carbon Steel Bar



01

Grade and Quality:

235B,10#,20#,35#,45#,20Cr,40Cr,Q345B,35CrMoA,42CrMoA,S35C,20CrMnTiH,27SiMn,and so on.

02

Size and Diameter:

Can be customize as request.

03

Surface and Finishing:

Mill surface,black,paint with oil in different color and so on can be as request.

004 Carbon Steel Pipe



01

Grade and Quality:

10#,20#,45#,Q195,Q235,Q345,16Mn,35CrMo,15CrMo,1Cr5Mo,
30CrMnSi,API5L A,B,X42,X52,API5CT J55,20G ASTM A106-GrB

02

Size and Diameter:

1/8"-48" or as customized.

03

Surface and Finishing:

Black,galvanized,painted,oiled.

005 Carbon Steel Sheet



01

Grade and Quality:

ASTM:A285M,Gr.B / A283M,Gr.C / A570,Gr.A / A709M etc.
JIS:SS330,SS400,SS490.

BS:S185,040A12,A235JR,S275J2G3.

02

Size and Diameter:

Cold rolled: Thickness($\leq 3\text{mm}$) X 4FT X 8FT / Thickness($\leq 3\text{mm}$) X 1219mm X 2438mm.

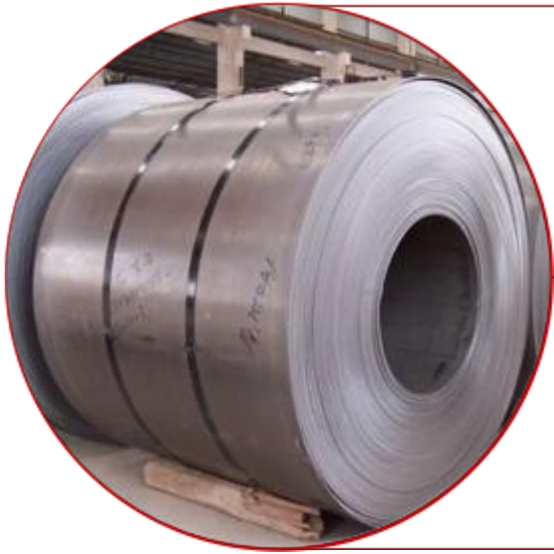
Hot rolled: Thickness($\geq 3\text{mm}$) X 1500mm X 6000mm.

03

Surface and Finishing:

No.1,2B,Pickled,Matt,Polished,Mirror,Satin,Brushed
Others.

006 Carbon Steel Coil



01

Grade and Quality:

Q195, Q235, Q275, Q345, Q355, S235JR, S275JR, S355JR, SS400, ST52, CK4, A36, etc.

02

Size and Diameter:

Thickness: 0.1~16mm.

Width: 600~2500mm.

Length: as per requirement.

03

Surface and Finishing:

Black/bright.

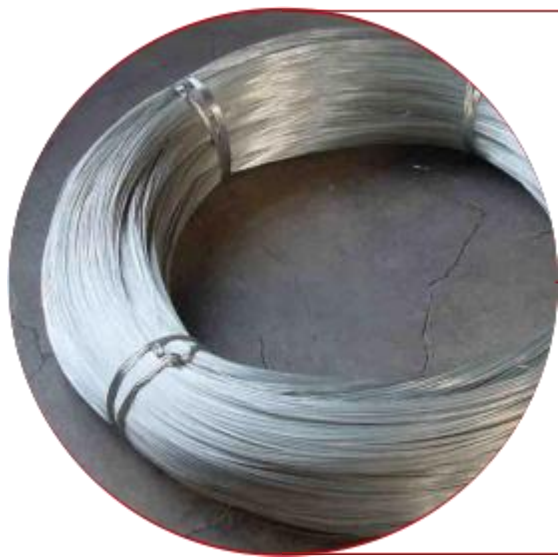
03 Galvanized

Introduction

Zinc plating refers to a surface treatment technique that coats a layer of zinc on the surface of a metal, alloy or other material for aesthetics, rust prevention, and the like.

001

Galvanized Wire



01

Grade and Quality:

Q195,Q235,Q215,DC51D,DC54D,DX51D,S280GD,S350GD,S350G
D+Z,DX53D,CSB etc.

02

Size and Diameter:

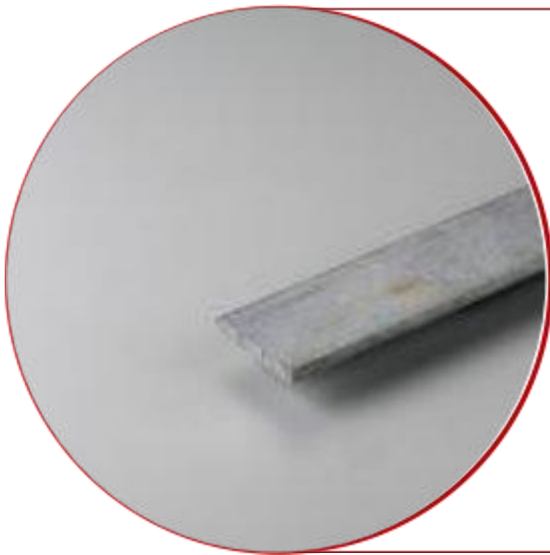
Diameter from 0.05mm to 10mm.

03

Surface and Finishing:

Galvanized.

002 Galvanized Bar



01

Grade and Quality:

Q195,Q235,Q215,DC51D,DC54D,DX51D,S280GD,S350GD,S350GD+Z,DX53D,CSB,S320GD,SGCC,SPCD,St12, etc.

02

Size and Diameter:

Can be customize as request.

03

Surface and Finishing:

Galvanized.

003 Galvanized Pipe



01

Grade and Quality:

Q195,Q235,Q215,DC51D,DC54D,DX51D,S280GD,S350GD,S350GD+Z,DX53D,CSB,S320GD,SGCC,SPCD,St12,St13,SECC,SECD etc.

02

Size and Diameter:

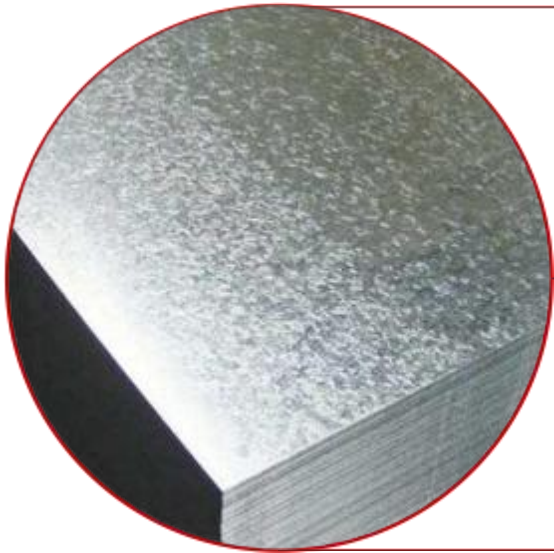
1/8"-48" or as customized.

03

Surface and Finishing:

Galvanized.

004 Galvanized Sheet



01

Grade and Quality:

Q195,Q235,Q215,DC51D,DC54D,DX51D,S280GD,S350GD,S350GD+Z,DX53D,CSB,S320GD,SGCC,SPCD,St12,St13,SECC,SECD etc.

02

Size and Diameter:

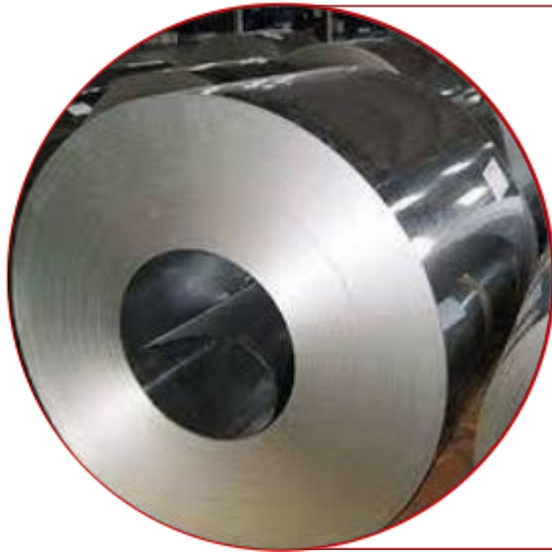
Thickness($\geq 3\text{mm}$) X 1500mm X 6000mm.

03

Surface and Finishing:

Galvanized.

005 Galvanized Coil



01

Grade and Quality:

Q195,Q235,Q215,DC51D,DC54D,DX51D,S280GD,S350GD,S350GD+Z,DX53D,CSB,S320GD,SGCC,SPCD,St12,St13,SECC,SECD,BLCE+Z,BLDE+Z,St01Z,St02Z,St03Z, etc.

02

Size and Diameter:

As per requirement.

03

Surface and Finishing:

Galvanized.

04 Alloy steel



Introduction

alloy refers to a metal mixed with another or several metals or non-metals, melted, cooled and solidified to obtain a solid product with metallic properties.

001 Alloy Pipe Fittings



01

Grade and Quality:

ASTMA356-GR9,A405-P24,ASTMA193-B16, ASTMA217-WC1,ASTMA217-WC6, ASTMA217-WC9, ASTMA217-C5,ASTMA335-GR.P1.A234GR.WPB, A234-WPB A182GR.F11 A403-WP316.A182-F316.A312-TP316etc.

02

Size and Diameter:

As require.

03

Surface and Finishing:

Black, bright, etc.

002 Alloy Pipe Fittings Cover



01

Grade and Quality:

ASTMA356-GR9,A405-P24,ASTMA193-B16, ASTMA217-WC1,ASTMA217-WC6, ASTMA217-WC9, ASTMA217-C5,ASTMA335-GR.P1.A234GR.WPB, A234-WPB A182GR.F11 A403-WP316.A182-F316.A312-TP316etc.

02

Size and Diameter:

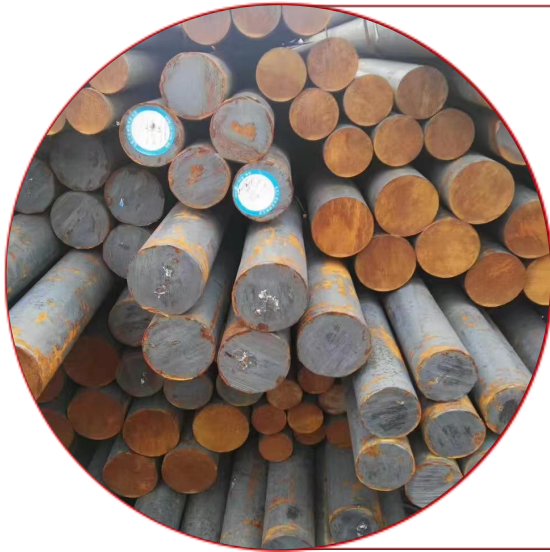
As require.

03

Surface and Finishing:

Black, bright, etc.

003 Alloy Bar



01

Grade and Quality:

4130, 4140, 4340, 30CrMo, 42CrMo4, and so on

02

Size and Diameter:

As customer's request

03

Surface and Finishing:

BlackMill surface, black, paint with oil in different color and so on can be as request.

004 Alloy Pipe/Tube



01

Grade and Quality:

ASTMA356-GR9,A405-P24,ASTMA193-B16, ASTMA217-WC1,ASTMA217-WC6, ASTMA217-WC9, ASTMA217-C5,ASTMA335GR.P1ASTMA234GR.WPB,ASTMA182GR.F11.A40
3-WP316.A182-F316.A312-TP316

02

Size and Diameter:

1/8"-48" or as customized.

03

Surface and Finishing:

Black,galvanized,painted,oiled etc..

005 Alloy Sheet/Plate



01

Grade and Quality:

4130, 4140, 4340, 30CrMo,42CrMo4,and so on

02

Size:

Cold rolled: Thickness($\leq 3\text{mm}$) X 4FT X 8FT / Thickness($\leq 3\text{mm}$) X 1219mm X 2438mm.

Hot rolled: Thickness($\geq 3\text{mm}$) X 1500mm X 6000mm.

03

Surface and Finishing:

No.1,2B,Pickled,Matt,Polished,Mirror,Satin,Brushed Others.

Jawaysteel



3

Contact Us



3

Contact us

Our Office:

Shanghai Jaway Metal Co.,Ltd

Address: Suite 15G, YongRong Enterprise Center, No. 1111
Liyang Road, HongKou Area, Shanghai, 200081, China.

Tel: +86-21-36360933 36360955 36361733 36361755

Fax: +86-21-36361766

website: www.jawaysteel.com

Email: sales@jawaysteel.com

Our Factory:

Jiangsu Jaway Stainless Steel Products Co.,Ltd

Address: Dainan Industrial park, Xinghua Jiangsu Province,
China

Tel: +86-523-83580888 83772111 83771119

Fax: +86-523-83773111 83772119

website: www.jsjwbxg.com

Email: sales@jsjwbxg.com



Jawaysteel

Thank you

Jaway